

Manitoba
Department of Mines and Natural Resources
MINES BRANCH

THE CORRESPONDING SHEET OF THE NATIONAL TOPOGRAPHIC SERIES IS 64 C/15 Map No. 2

LEGEND

PRECAMBRIAN

- 22 Quartz porphyry; quartz feldspar porphyry. Probably of pre-Sickle age.
19 Pegmatite; aplite.
18 Granite and alaskite.
17 Siliceous hornblende-biotite tonalite. (Age of this unit is doubtful and is based on its apparent extension southward towards Lasthope Lake.)
16 Black Trout Diorite.

SICKLE SERIES

- 14 Arkose, quartzite, greywacke; minor pebble beds.
13 Conglomerate.

UNCONFORMITY

- 12 Pink to buff biotite and hornblende granite and granodiorite, massive to gneissic. Includes some heavily sheared granite at Waskwan Lake and Cartwright Lake.
11 Grey massive to gneissic hornblende-biotite tonalite. Minor amounts of diorite are included.
11a Leucotonalite.
10 Diorite and quartz diorite; minor included volcanic rocks. (Minor amounts of gabbro as dykes, not differentiated, south of Cartwright Lake.)
9 Gabbro, norite, hornblende; minor diorite.

WASKWAN SERIES

- 7 Tuff, agglomerate, volcanic breccia; some interbedded volcanic and sedimentary rocks.
6 Rhyolite and trachyte.
5 Amphibolites derived from andesite and basalt. Minor interbedded sediments and pyroclastics.
4 Mainly impure quartzite. Some interbedded lavas, pyroclastics and greywacke.
3 Interbedded volcanic, sedimentary and/or tuffaceous rocks.
2 Greywacke, quartzite, and derived quartz-biotite-feldspar gneisses and schists.
1 Conglomerate and zones containing conglomerate lenses.

SYMBOLS

- Geological boundary approximate assumed doubtful
Outcrop, or area of small outcrops
Strike and dip of bedding inclined vertical top known overturned Dip not reported
Strike and dip of schistosity or foliation inclined vertical Dip not reported
Trace of axial plane: syncline, anticline
Shear zone or fault, with direction of motion and plunge of linear features.
Strike and dip of jointing inclined vertical horizontal
Plunge of linear feature.
Drag fold, with plunge of axis and sense of relative motion
Glacial Striae
Esker
Prospect pit, or trench
Anomalous magnetic declination
Rapids, Falls and portage (with length)
Swamp or open muskeg
Centre of aerial photograph
Area of mixed or hybrid rocks
Winter road
Cabin

Unofficial lake names in local use are shown in parenthesis.

Geology by

G. C. MILLIGAN, 1957

Compiled from the field work of:

J. D. ALLAN, 1947, 1948

J. D. BATEMAN, 1941

Supplemented by the reports and maps of exploration and mining companies now, or formerly, active in the area.

To accompany Publ. 57-1

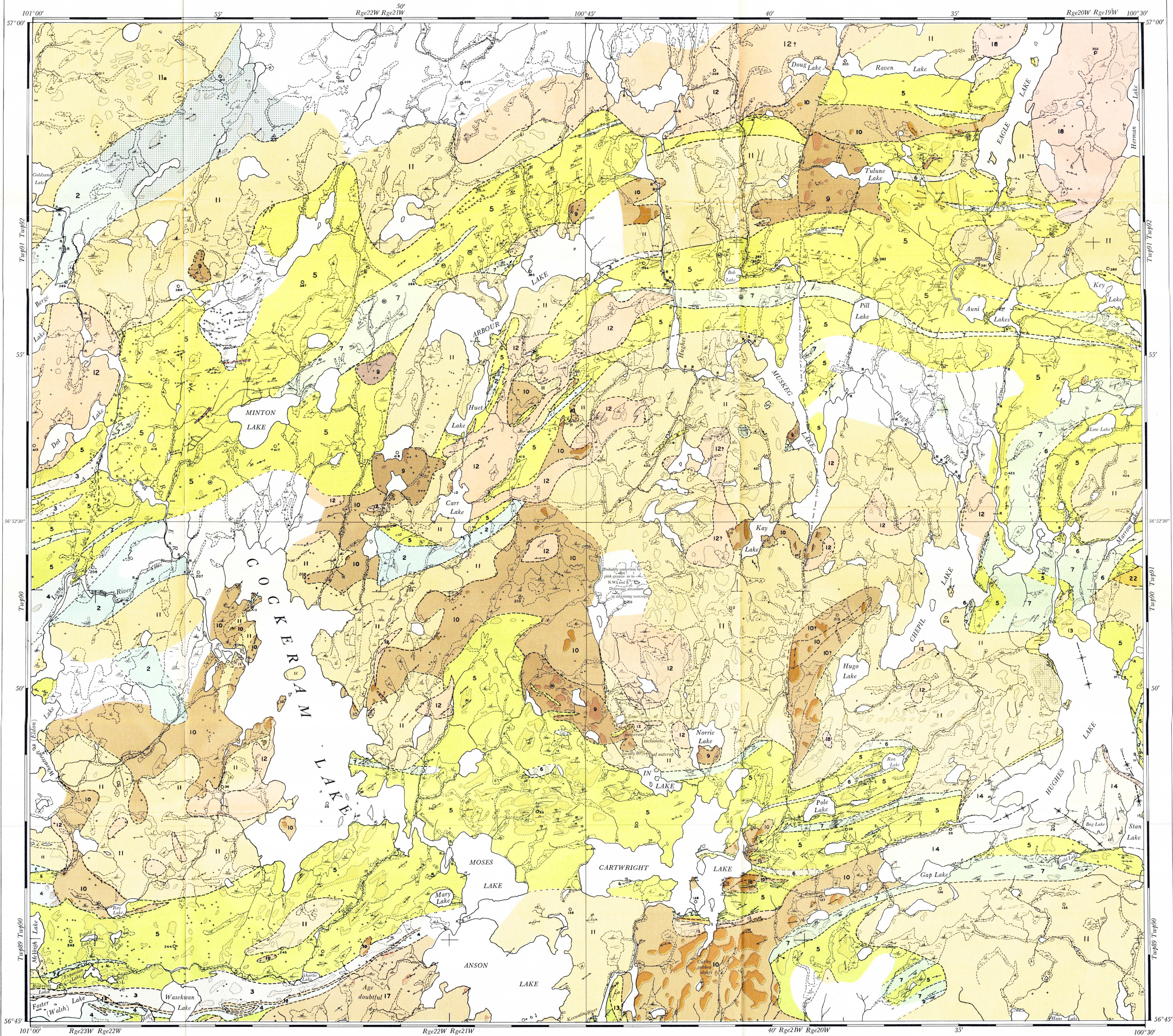
Magnetic Declination approximately 16 degrees 30 minutes east, 1951;
Decreasing 5 minutes annually.

Aerial Photographs numbered: A10934: 302-312
A10947: 379-390; 415-425
A11080: 205-216; 134-141
A11328: 27-38
A11064: 242-245

provide complete stereographic coverage of this area and are available from the National Air Photo Library, Ottawa.

64 F/3 GOLDSDN LAKE	64 F/2 WELLS LAKE	64 F/1 MELVIN LAKE
64 C/14 LYNN LAKE	64 C/15 COCKERAM LAKE	64 C/16 BARRINGTON LAKE
64 C/13 MCGAVOCK LAKE	64 C/10 SICKLE LAKE	64 C/9 EDEN LAKE

INDEX TO ADJOINING SHEETS



Base map compiled from aerial photographs taken by the Royal Canadian Air Force in 1942, and from surveys by the Department of the Interior, Canada, and the Province of Manitoba.

COCKERAM LAKE
GRANVILLE LAKE MINING DIVISION

